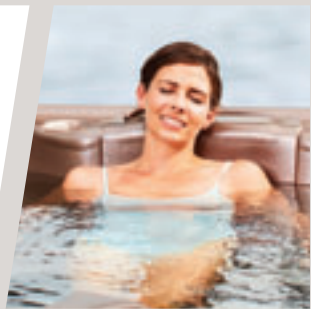
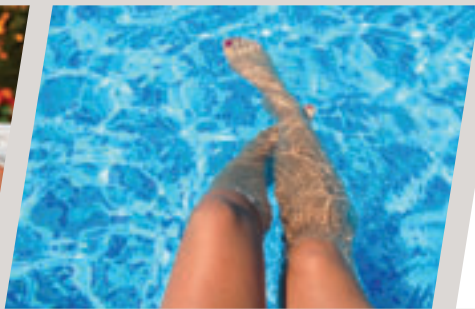


2020 FROG LEAP  
PRODUCT CATALOG

**king**<sup>®</sup>  
TECHNOLOGY



# KING TECHNOLOGY

## Our Vision:

Enrich Lives Daily

## Our Mission:

Water treatment rock n' roll through radical invention, unique delivery and star wars ingredients.



### **The King Family**

Front row: Mary, Joe, Randi and Everett (Evie)

Back row: Carson, Graydon, Erin, Alex and Oskar

I have learned over the years that it's not about the bottom line. It's about the people we impact. Our goal is to grow this industry by helping dealers and distributors achieve a lasting success. To do that, we have to impact the pool and hot tub owner with revolutionary ways of making their lives easier so they enjoy the water more and work on it less. Our promise is we will continue to offer products and services that enrich your lives and your customers.

*Joe King, Owner and CEO*

# OUR COMMITMENT TO YOU



At King Technology, we value our partners and strive to make your life easier and a relationship with King Technology rewarding and profitable.

## Here is how we support your business:



Quality and innovative products that perform as advertised  
*(see pages 6-13)*



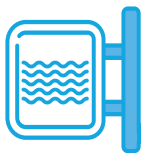
A proven repeat business model that creates true after-market growth



An enforced Minimum Advertised Price (MAP) policy that is consistently at 98% MAP compliance



Interactive dealer training to help your staff effectively sell FROG products  
*(see page 22)*



FREE literature and POP materials to attract attention and educate consumers  
*(see pages 16-20)*



Program incentives to reward your commitment to FROG products  
*(see page 22)*



Online and social media advertising that drives consumers to our dealers



The FROG Water Care App that increases FROG satisfaction resulting in greater repeat sales  
*(see page 23)*

## Here is what some dealers have told us:

“If other manufacturers did half as much as King Technology does with regard to innovative products, training, availability, ordering marketing materials online and MAP, that would be remarkable.”

*Sparkle Pools, Inc.*

“King is great to work with compared to other manufacturers. They are always accessible, and I’ve never had a situation they couldn’t resolve.”

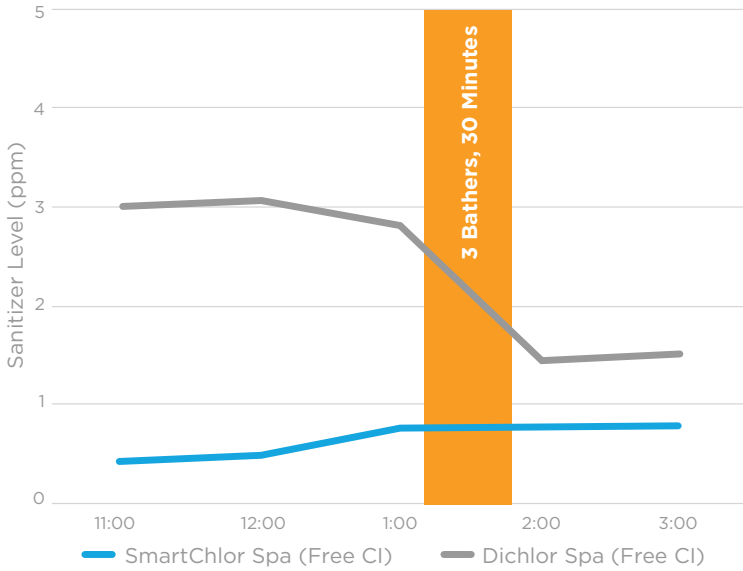
*Alden Pools & Play*

“As a company, King is as invested in growth as we are. That kind of thought process really helps with the partnership.”

*Valley Pools & Spas*

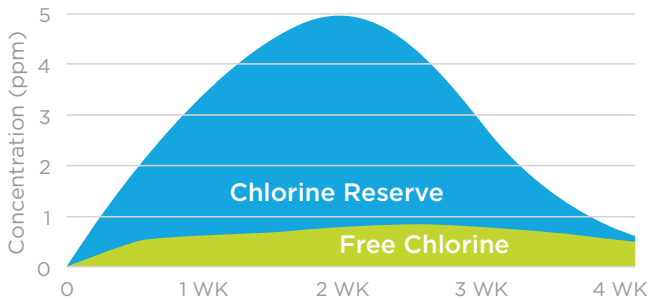
# FROG® @ease® WITH SMARTCHLOR® TECHNOLOGY

## Self-Regulating Properties of SmartChlor Technology

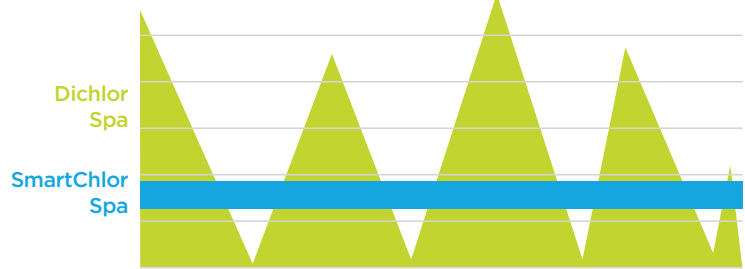


SmartChlor Technology maintains a consistently low free chlorine level of 0.5 to 1.0 ppm at all times. It does so by creating a reserve that converts to free chlorine when it senses demand on the hot tub. Dichlor's free chlorine level drops significantly under demand requiring the user to shock. SmartChlor reduces shocking to only once a month!

## The Genius of SmartChlor



## SmartChlor vs. Dichlor



No more yo-yo chlorine levels with SmartChlor!

**BE #1!** ENSURE YOUR SUCCESS WITH FROG @ease

FROG @ease is **3X more profitable** than Dichlor so you grow your business exponentially every year!

To calculate your profits with @ease, visit [frogatease.com](http://frogatease.com)



# THE NEGATIVE IMPACT OF CYA IN HOT TUBS



**Did you know every bottle of Dichlor is about 50% Cyanuric Acid? It's in the name!**

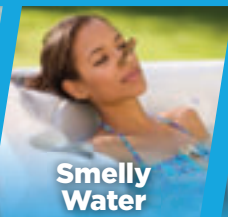
Did you know the CDC does not recommend the use of chlorine with cyanuric acid in hot tubs?

Weeks	CYA Level	Results
4	50	Problems begin
7	100	Chlorine ineffective
10	150	Unrecoverable

*Based on 1/2 tsp per 100 gallons 4x per week*

With every dose of Dichlor, the CYA builds while the chlorine becomes less and less effective. In as little as seven weeks, the consumer may have no option but to drain and refill the hot tub.

**At CYA levels of over 50 ppm, hot tub owners will experience...**



**The good news is FROG @ease has 0% CYA.** Converting your Dichlor customers will mean happier hot tub owners that remain loyal to you.

**Here's how to get started:**

- Learn more at [frogatease.com](http://frogatease.com)
- Take our CYA test at [partners.kingtechnology.com](http://partners.kingtechnology.com)
- Order our new CYA Test Cards that promote FROG @ease



Give this card to struggling hot tub owners. When they test their CYA and the levels are high, you have the solution - FROG @ease

Order Code: **20-49-0221**

# PRODUCTS FOR HOT TUBS

Supporting dealers with a Minimum Advertised Price (MAP) Policy



## FROG SERENE® FLOATING SYSTEM

Fresh Mineral Water for any hot tub up to 600 gallons. Comes with FROG Jump Start start-up shock and 10 FROG Test Strips. It simply floats in the hot tub.

ORDER CODE: **01-14-3883**

MSRP: **\$46.95 each**

6 systems per case / 90 cases per pallet



## FROG SERENE CARTRIDGE KIT

Includes 1 Mineral Cartridge and 3 Bromine Cartridges.

ORDER CODE: **01-14-3856**

MSRP: **\$66.95 each**

**MAP** **\$57.80 each**

6 systems per case / 105 cases per pallet



## FROG @ease FLOATING SANITIZING SYSTEM

Fresh Mineral Water with SmartChlor Technology for hot tubs up to 600 gallons. Comes with FROG Jump Start start-up shock and 30 FROG @ease Test Strips. Floats in the tub and flips when empty. This system is replaced every 4 months or when draining the hot tub.

ORDER CODE: **01-14-3256**

MSRP: **\$47.95**

**MAP** **\$42.95**

6 systems per case / 56 cases per pallet



## FROG @ease SMARTCHLOR CARTRIDGE 3 PACK

For use only with the FROG @ease Floating Sanitizing System. The unique SmartChlor Technology slowly releases over 3-4 weeks. When the system flips over, it is time to replace.

ORDER CODE: **01-14-3258**

MSRP: **\$44.95 per 3 pack**

**MAP** **\$42.95 per 3 pack**

6 3 packs per case / 56 cases per pallet

**AVAILABLE THROUGH  
SELECT HOT TUB  
MANUFACTURERS**



FROG @ease IN-LINE  
SANITIZING SYSTEM



FROG @ease SMARTCHLOR  
IN-LINE CARTRIDGES



All prices subject to change without notice.

HAVE QUESTIONS?  
CALL 800-222-0169



### FROG SERENE MINERAL CARTRIDGE

For use in the FROG Serene Floating and FROG In-Line Systems. Set Minerals to #6 (wide open). Lasts 4 months or until hot tub is drained and refilled. Simply discard and replace.

ORDER CODE: **01-14-3812**

MSRP: **\$34.49 each**

 **\$29.49 each**

12 units per case / 186 cases per pallet



### FROG SERENE BROMINE CARTRIDGE (150 GM)

For use in the FROG Serene Floating and FROG In-Line Systems or as a stand alone floater. Adjustable and long lasting (2-4 weeks). Simply discard or recycle and replace.

ORDER CODE: **01-14-3824**

MSRP: **\$11.25 each**

 **\$10.49 each**

24 units (2 12 packs) per case / 128 cases per pallet



### FROG FILTER MATE™

Use this mineral hot tub disinfectant in the core of a filter, in a skimmer tray or in the filter well. Supplement with bromine or chlorine. Set reminder dial and replace every 4 months.

ORDER CODE: **01-14-3712**

MSRP: **\$40.49 each**

12 systems per case / 150 cases per pallet



### FROG JUMP START®

The effervescent start-up shock for hot tubs up to 600 gallons. Use every time the hot tub is drained and fresh water is added.

ORDER CODE: **01-14-6012**

MSRP: **\$3.95 each**

72 units per case (6 12 packs) / 81 cases per pallet



### FROG TEST STRIPS

Fresh Mineral Water pools or hot tubs start with FROG Test Strips. The testing accuracy of the pros in an easy to use dip and read strip that helps FROG users maintain a low chlorine or bromine level.

ORDER CODE: **01-14-3318**

MSRP: **\$11.95 each**

50 count bottle / 12 bottles per case / 120 cases per pallet



### FROG @ease TEST STRIPS

With the unique properties of SmartChlor Technology, FROG @ease has its own test strips with a convenient out indicator reading.

ORDER CODE: **01-14-3350**

MSRP: **\$9.95 each**

30 count bottle / 12 bottles per case / 120 cases per pallet



# FROG LEAP BRAND EVEN STRONGER



## Introducing 1-2-3 Ahhh!

*New from FROG Leap.*

With our new FROG Leap packaging we are introducing an easy way to capture the 3 parts of the FROG Leap System.

Step 1 - The Minerals

Step 2 - Chlorine

Step 3 - Algae Protection

Watch for it on packaging and POP and use it to better describe the ease and convenience of FROG Leap.

The result — happier customers and strong after market sales!

## STEP 1 IT STARTS WITH THE MINERALS...



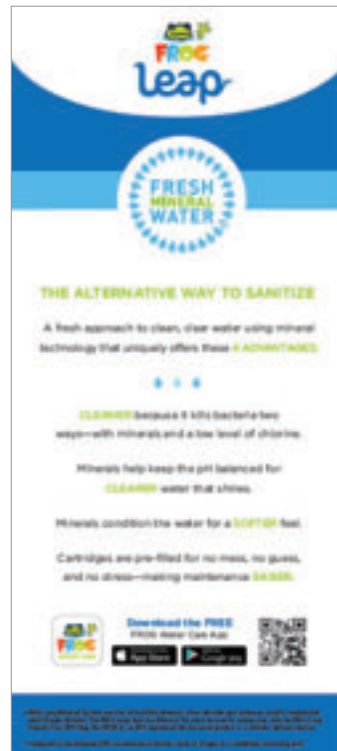
**Before**



**After**

- Cleaner look with full color graphics
- Emotive image to convey fun and easy
- Strong consumer tested benefits





- The Fresh Mineral Water story continues to resonate
- 8 helpful icons explain the benefits of the entire Leap System

- The back covers the ease of 3 simple steps and how long each lasts

**STEP 2 AND STEP 3 CHLORINE AND ALGAE PROTECTION GUARANTEE!**

- Artwork from the minerals carries over to the 6pk tray and the Pool Wake Up! kit.

- Simple and clean look with “Step 2” and “Step 3” prominently displayed



*Before*



*After*



*Before*



*After*

# PRODUCTS FOR POOLS

Supporting dealers with a Minimum Advertised Price (MAP) Policy



## FLIPPIN' FROG®

Fresh Mineral Water for soft-sided pools 2,000 to 5,000 gallons.

ORDER CODE: **01-12-8406**

MSRP: **\$30.95**

**MAP** \$28.95

6 systems per case / 49 cases per pallet



## FLIPPIN' FROG REPLACEMENT CHLORINE CARTRIDGE

Fits the Flippin' FROG System. Lasts 3-4 weeks.

ORDER CODE: **01-03-8356**

MSRP: **\$11.49**

**MAP** \$10.49

6 systems per case / 84 cases per pallet



## FLIPPIN' FROG XL®

Fresh Mineral Water for any pool 5,000 to 10,000 gallons.

ORDER CODE: **01-12-8606**

MSRP: **\$61.95**

**MAP** \$56.95

6 units per case / 20 cases per pallet



## FLIPPIN' FROG XL REPLACEMENT CHLORINE CARTRIDGE

Fits the Flippin' FROG XL System. Last 3-4 weeks.

ORDER CODE: **01-03-8550**

MSRP: **\$22.95**

**MAP** \$20.95

8 units per case / 78 cases per pallet



## FROG LEAP® INFUZER®

Fresh mineral water for pools 7,000 to 25,000 gallons. Includes a FROG Leap Infuzer, a FROG Leap Anti-Bac Mineral Pac 25K and a 6" nipple installation kit. Do not install off-line.

ORDER CODE: **01-01-7820**

MSRP: **\$319.95**

96 units per pallet



## FROG LEAP ANTI-BAC MINERAL PAC® 25K

Fits FROG Leap 7800 and POOL FROG 5100 or 6100. For pools up to 25,000 gallons.

ORDER CODE: **01-12-7822**

MSRP: **\$107.95 each**

**MAP** \$92.95 each

12 units per case / 24 cases per pallet

All prices subject to change without notice.



### FROG LEAP TWIN®

Fresh Mineral Water for pools up to 40,000 gallons. Includes 2 FROG Leap Infuzers and 1 FROG Leap Anti-Bac Mineral Pac 40K. Use with the FROG Leap Torpedo Pac 4 lb.

ORDER CODE: **01-01-7850**

MSRP: **\$527.95**

24 units per pallet



### FROG LEAP ANTI-BAC MINERAL PAC 40K

Fits FROG Leap Twin, FROG Leap 7800 and Pool FROG 6100. For pools up to 40,000 gallons.

ORDER CODE: **01-12-7852**

MSRP: **\$137.95 each**

12 units per case / 24 cases per pallet

**MAP** **\$113.95 each**



### FROG LEAP TORPEDO PAC®

Prefilled with Trichlor. For use in FROG Leap 7800 and POOL FROG 5100, 5400 or 6100.

ORDER CODE: **01-03-7937**

MSRP: **\$21.49 each**

12 units per case (2 6-packs) / 40 cases per pallet

**MAP** **\$20.95 each**



### FROG LEAP TORPEDO PAC 4 lbs

Prefilled with 4 lbs. of Trichlor. For use in FROG Leap Twin.

ORDER CODE: **01-03-7833**

MSRP: **\$37.95**

3 units per case / 64 cases per pallet

**MAP** **\$34.95 each**



### FROG LEAP POOL WAKE UP!® / POOL HIBERNATION®

3-Step Opening or Closing Pack includes Depth Charge® non-chlorine shock, Reveille® chlorine shock and All-Out 90-Day Algae Preventative. One pack per 15,000 gallons.

ORDER CODE: **01-10-7858**

MSRP: **\$48.95 each**

4 units per case / 40 cases per pallet

**MAP** **\$46.95 each**



### FROG LEAP ALL-OUT®

Fits inside the Anti-Bac Mineral Pac on all FROG Leap and POOL FROG Systems. One bottle per 15,000 gallons for a 90-day Algae Protection Guarantee!

ORDER CODE: **01-10-7872**

MSRP: **\$34.95 each**

12 units per case / 50 cases per pallet

**MAP** **\$28.95 each**



### INSTANT FROG®

Fresh Mineral Water for in ground pools up to 25,000 gallons. Requires no installation.

RETAIL ORDER CODE: **01-18-4406**

MSRP: **\$118.95**

**MAP** **\$99.95**

6 per case / 112 cases per pallet

BULK FOR SERVICE ORDER CODE: **01-18-4410**

NOTE: NOT FOR RETAIL SALE. Call King Technology for pricing

6 units per case / 110 cases per pallet





# NEW WATER®

Light-weight, pre-filled chlorine pacs with erosion technology



## NEW WATER CYCLER 120

In-line with 1.5" threaded inlet/outlet ports for use on pools up to 25,000 gallons.

Do not install off-line. Uses New Water Cyclor Pac #105C.

ORDER CODE: **01-01-0120**

MSRP: **\$185.95 each**

*96 units per pallet*



## NEW WATER CYCLER 400

In-line with 2" threaded inlet/outlet ports for use on pools up to 40,000 gallons.

Do not install off-line. Uses New Water Cyclor Pac #407C.

ORDER CODE: **01-01-0400**

MSRP: **\$197.95 each**

*96 units per pallet*



## NEW WATER CYCLER 430

Off-line unit with accessory kit for use on pools up to 25,000 gallons.

Do not install in-line. Uses New Water Cyclor Pac #407C.

ORDER CODE: **01-01-0430**

MSRP: **\$243.95 each**

*96 units per pallet*



## NEW WATER CYCLER PAC 105C

Pre-filled with 4.16 lbs. of Trichlor. For use in the New Water Cyclor 120.

ORDER CODE: **01-03-1413**

MSRP: **\$38.95 each**

*3 units per case / 64 cases per pallet*



## NEW WATER CYCLER PAC 407C

Pre-filled with 6.16 lbs. of Trichlor. For use in New Water Model 400 & 430 Cyclers.

ORDER CODE: **01-03-4613**

MSRP: **\$55.49 each**

*3 units per case / 56 cases per pallet*



# PERFORM-MAX™ BY SANI-KING

Chemical feed systems for chlorine or bromine

**SANI-KING**

## PERFORM-MAX 920

In-line only for pools up to 20,000 gallons using chlorine or 15,000 gallons using bromine.

7 lb. capacity.

ORDER CODE: **01-05-0920**

MSRP: **\$139.95 each**

*96 units per pallet*



## PERFORM-MAX 940

In-line only for pools up to 50,000 gallons using chlorine or 25,000 gallons using bromine.

10 lb. capacity.

ORDER CODE: **01-05-0940**

MSRP: **\$159.95 each**

*96 units per pallet*



## PERFORM-MAX 960

Off-line only for pools up to 40,000 gallons using chlorine or 20,000 gallons using bromine.

10 lb capacity.

ORDER CODE: **01-05-0960**

MSRP: **\$191.95 each**

*96 units per pallet*



## PERFORM-MAX 980

Model #940 in-line with (2) 2" MPT x .5" FPT Reducers. Follow pool sizes for Model 940.

ORDER CODE: **01-05-0980**

MSRP: **\$168.95 each**

*96 units per pallet*



All prices subject to change without notice.

# FROG AND VARIABLE SPEED PUMPS



Variable speed pumps are becoming more popular and some states are now mandating their use. As this trend continues, even for above ground pools, they create challenges for builders and pool owners to determine how long and at what speed these pumps should operate to ensure that heaters, cleaners and sanitizing systems like FROG will perform as designed.

## JUST REMEMBER: 4 TO 8 FOR 6! (4 TO 8 PSI FOR 6 HOURS A DAY ON HIGH SPEED)

Here are a few tips for ensuring success:

### TIP 1 PROGRAM THE PUMP

Program the pump to meet the needs of each pool owner with at least six hours on high speed.

(Approximately 3000 RPMs)



### TIP 2 CHECK THE BACK PRESSURE

While on high speed, check the back pressure on the FROG System with our pressure gauge to ensure it is between 4 and 8 psi.

ORDER CODE: 01-22-4000



### TIP 3 CHANGE THE EYEBALL FITTING

If lower than 4 psi or higher than 8 psi, change out the eyeball fitting in the return jets to increase or decrease back pressure.

(A smaller eyeball to increase pressure and a larger eyeball to decrease pressure)



### TIP 4 SET THE FROG DIAL

Set the FROG dial and have the pool owner monitor the chlorine levels for a few days and adjust the setting no more than 1 number per day until the level stays between 0.5 and 1.0 ppm.



For more information on the hydraulics of FROG, see the last section of either our **POOL FROG** or **FROG Leap** training course at [partners.kingtechnology.com](http://partners.kingtechnology.com).



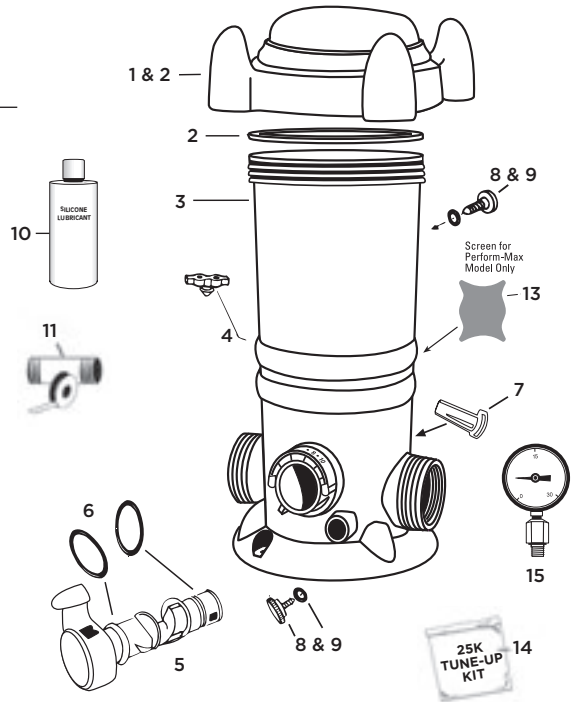
# PARTS DIAGRAMS AND PRICING

CAN'T FIND PARTS? ORDER FROM [partners.kingtechnology.com](http://partners.kingtechnology.com) or call 800-222-0169

## FROG Leap 7800, FROG Leap Twin, POOL FROG 6100, New Water 120 and Perform-Max 920

REF #	PART #	CS.QTY	DESCRIPTION	SUGG. LIST
1 & 2	01-22-1410	1	Cap w/O-Ring (New Water)	\$38.80 ea
1 & 2	01-22-1416	1	Cap w/O-Ring (Leap)	\$38.80 ea
1 & 2	01-22-1417	1	Cap w/O-Ring (FROG)	\$38.80 ea
1 & 2	01-22-1418	1	Cap w/O-Ring (Black)	\$38.80 ea
2	01-22-1926	6	Cap O-Ring	\$11.83 ea
3	N/A		Body	N/A
4	01-22-9486	6	Pressure Relief Valve	\$6.72 ea
5, 6 & 7	01-22-1448	6	Control Dial Assembly (Black)	\$18.68 ea
5, 6 & 7	01-22-1457	6	Control Dial Assembly (Leap)	\$18.68 ea
5, 6 & 7	01-22-1458	6	Control Dial Assembly (FROG)	\$18.68 ea
6	01-22-1456	6	Control Dial O-Ring Set	\$6.17 ea
7	N/A		Control Dial Locking Pin	N/A
8 & 9	01-22-9946	6	Knob w/O-Ring (Black)	\$3.88 ea
8 & 9	01-22-9627	6	Knob w/O-Ring (Leap)	\$3.88 ea
8 & 9	01-22-9628	6	Knob w/O-Ring (FROG)	\$3.88 ea
10	01-22-9970	15	Silicone Lubricant	\$4.80 ea
11	01-22-1710	1	Nipple Installation Kit	\$8.08 ea
12	01-22-1480	1	Mounting Base (FROG)	\$10.47 ea
12	01-22-1481	1	Mounting Base (Leap)	\$10.47 ea
12	01-22-1485	1	Mounting Base (Black)	\$10.47 ea
13	01-22-9666	6	Perform-Max Screen	\$6.37 ea
14	01-22-1470	12	25K System Tune-up Kit	\$22.42 ea
15	01-22-4000	1	Pressure Gauge	\$33.13 ea

For discontinued models 100, 130, 200, 910, 930, 5100 and 5200, contact Customer Service to verify parts needed.

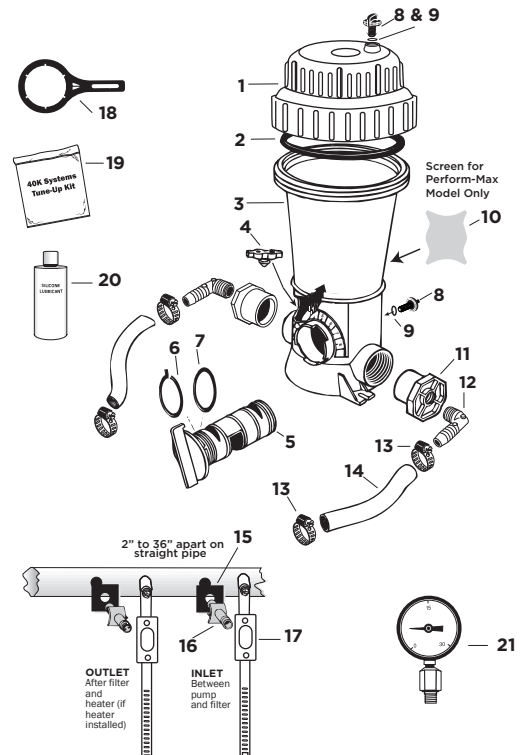


Tune-Up Kit includes Silicone Lubricant, Control Dial O-ring Set, Knob w/O-rings (2), and Cap O-ring

## POOL FROG 5400, 5430, XL Pro, New Water 400, 430 and Perform-Max 940, 960, 980

Discontinued Models 600, 630, 5600 and 5630 also use the following parts.

REF #	PART #	CASE QTY	DESCRIPTION	SUGG. LIST
1 & 2	01-22-9411	1	Cap w/O-Ring & Knob (Perform-Max w/knob)	\$50.95 ea
1 & 2	01-22-9417	1	Cap w/O-Ring & Knob (FROG)	\$50.95 ea
1 & 2	01-22-9418	1	Cap w/O-Ring & Knob (XL Pro/New Water)	\$50.95 ea
2	01-22-9926	6	Cap O-Ring	\$17.08 ea
3	N/A		Body	N/A
4	01-22-9486	6	Pressure Relief Valve	\$6.72 ea
5, 6 & 7	01-22-9446	6	Control Dial Assembly (Black)	\$19.15 ea
5, 6 & 7	01-22-9448	6	Control Dial Assembly (FROG)	\$19.15 ea
6 & 7	01-22-9456	6	Control Dial O-Ring Set	\$7.78 ea
8 & 9	01-22-9628	6	Knob w/O-Ring (FROG)	\$3.88 ea
8 & 9	01-22-9946	6	Knob w/O-Ring (Black)	\$3.88 ea
10	01-22-9666	6	Perform-Max Screen	\$6.37 ea
11*	01-22-8626	6	2" x .5" Bushing	\$6.17 ea
12*	01-22-7806	6	.5" 90° Elbow	\$4.95 ea
13*	01-22-7696	6	Small Clamp	\$4.05 ea
14*	01-22-7700	1	6' PVC Tubing (5/8" ID)	\$21.27 ea
15*	01-22-7856	6	Scoop Gasket	\$2.52 ea
16*	01-22-7796	6	Venturi Scoop	\$4.75 ea
17*	01-22-7916	6	Scoop Clamp	\$12.07 ea
18	01-22-8870	1	Cap/Control Dial Tool	\$8.80 ea
19	01-22-9950	12	40K System Tune-up Kit	\$30.82 ea
20	01-22-9970	15	Silicone Lubricant	\$4.80 ea
21	01-22-4000	1	Pressure Gauge	\$33.13 ea



\* Parts for Off-line Cyclers 430, 630, 960, 5430 and 5630.

Tune-Up Kit includes Silicone Lubricant, Control Dial O-ring Set, Knob w/O-rings (2), and Cap O-ring

# MARKETING MATERIALS

## LITERATURE

*Packaged in 50s*



All Pool Brochure with FROG Leap  
**20-48-0675**  
(8.5"W x 11"H)



Flippin' FROG Brochure  
**20-48-0619**  
(4"W x 8.5"H)



Instant FROG Brochure  
**20-48-0523**  
(4"W x 8.5"H)



FROG @ease In-Line System Cap Talker  
**20-48-2114**  
(3.5"W x 13"H)



FROG Hot Tub Products Brochure  
**20-48-0670**  
(8.5"W x 11"H)



FROG @ease In-Line System Brochure  
**20-48-0636**  
(8.5"W x 11"H)



FROG @ease Floating Bag Stuffer  
**20-48-2113**  
(4"W x 6"H)



FROG @ease In-Line Bag Stuffer  
**20-48-2139**  
(4"W x 6"H)

## SHELF TALKERS / DANGLERS



FROG Serene Packaging Change Dangler  
**20-48-0667**  
(8"W x 4.5"H)



FROG @ease Floating System Packaging Change Dangler  
**20-48-0666**  
(8"W x 4.5"H)



FROG @ease In-Line System Packaging Change Dangler  
**20-48-0665**  
(8"W x 4.5"H)



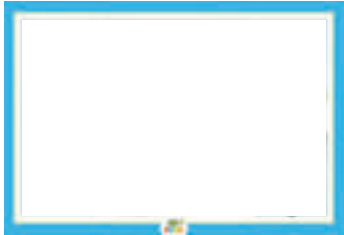
FROG @ease Conversion Dangler  
**20-48-0671**  
(8.5"W x 6"H)

TO ORDER THESE FREE MATERIALS, REGISTER AT [PARTNERS.KINGTECHNOLOGY.COM](http://PARTNERS.KINGTECHNOLOGY.COM)





## COUNTER DISPLAYS



FROG Countermat Holder  
**20-48-0664** (19"W x 13"H)

Order 1 or MORE of →  
the 5 countermat inserts  
on the right when ordering  
this holder.



All Hot Tub  
Products Insert  
**20-48-0294**



FROG @ease Floating  
System Insert  
**20-48-0296**



FROG @ease  
In-Line Insert  
**20-48-0295**



FROG Leap Insert  
**20-48-0272**



Flippin' FROG Insert  
**20-48-0273**

## SELF STANDING DISPLAYS



FROG @ease  
Counter Display  
**03-01-2063**  
(11"W x 16.75"H)



Flippin' FROG XL  
Display  
**03-01-2057**  
(25.5"W x 17"D x 67"H)



Stand Up FROG  
**03-01-2052**  
(34"W x 59"H)



FROG @ease  
Self-standing Display  
**03-01-2051**  
(19.25"L x 11.25"W x 64.5"H)

## BANNERS / DECALS



FROG Banner  
**20-48-2037**  
(48"W x 24"H)



Flippin' FROG Banner  
**20-48-2094**  
(48"W x 24"H)



Intex Store Sign  
**20-48-0607**  
(24"W x 36"H)



FROG Door Decal  
**20-48-2035**  
(7"W x 5"H)

# HOT TUB PLAN-O-GRAM IDEAS

These items are designed to help you bring attention to your on-shelf product displays. You can use some, or all of these depending on how much room you have.

## RETAIL SHELF LINERS



FROG @ease Shelf Liners  
**20-48-0668** (24" W x 4" H)



FROG Serene Shelf Liners  
**20-48-0669** (24" W x 4" H)

## NEW — AISLE VIOLATORS

*To be used with one of the clips below*



FROG Serene  
Aisle Violator  
**20-48-2133**  
(4"W x 11"H)



FROG @ease Floating System  
Aisle Violator  
**20-48-2131**  
(4"W x 11"H)



FROG @ease In-Line System  
Aisle Violator  
**20-48-2130**  
(4"W x 11"H)

## AISLE VIOLATOR CLIPS

*Must be ordered separately at time of ordering Aisle Violator*

Roto Clips  
Clips on to edge of shelf  
**20-48-2129**



Shelf Top Clip  
Inserts into holes on the top  
of metal shelves  
**20-48-2128**



**TO ORDER THESE FREE MATERIALS, REGISTER AT [PARTNERS.KINGTECHNOLOGY.COM](https://partners.kingtechnology.com)**

SEE MORE AT  
PARTNERS.KINGTECHNOLOGY.COM



Depending on which combination of FROG hot tub products you carry in your store, we have a plan-o-gram idea that will work for your shelf space. Here are a few ideas:

**FROG @ease  
PLANOGRAM**



**Size: 5' tall by 2' wide**

**Holds:**

- 4 @ease Floating Systems
- 12 @ease Floating SmartChlor Cartridge 3pks
- 4 @ease In-Line Systems
- 4 @ease In-Line SmartChlor Cartridge 12pks
- 2 @ease In-Line SmartChlor Mineral 12 pks
- 4 Jump Start 12pks
- 9 @ease Test Strips

**FROG SERENE  
PLANOGRAM**



**Size: 5' tall by 2' wide**

**Holds:**

- 12 Serene Systems
- 2 Serene Mineral Cartridge 12pks
- 6 Serene Bromine Cartridge 12pks
- 8 Serene Cartridge Kits
- 4 Jump Start 12pks
- 9 FROG Test Strips

**ALL-PRODUCTS  
PLANOGRAM**



**Size: 5' tall by 4' wide**

**Holds:**

- 6 @ease Floating Systems
- 8 @ease Floating SmartChlor Cartridge 3pks
- 8 Serene Systems
- 2 Serene Bromine Cartridge 12pks
- 2 Serene Mineral Cartridge 12pks
- 6 Serene Cartridge Kits
- 6 @ease In-Line Systems
- 2 @ease In-Line SmartChlor Cartridge 12pks
- 2 @ease Mineral Cartridge 12pks
- 2 Serene 200gm Bromine Cartridge 12pks
- 2 Filter Mate 12pks
- 9 @ease Test Strips,
- 8 Jump Start 12pks
- 9 FROG Test Strips

**SIMPLY ENROLL AT PARTNERS.KINGTECHNOLOGY.COM**

# NEW POP JUST FOR FROG LEAP

From floor stickers that lead the way to aisle violators and shelf liners that tell the 1-2-3- story. From danglers that introduce the new look to a new poster and floor stand for show & tell anywhere in the store. Combine these with the new counter mat, acrylic display and stand-up FROG, we have you covered!



FROG Leap  
Aisle Violator  
**20-48-2143**  
(9"W x 24"H)



FROG Leap  
Shelf Liners  
**20-48-0677**  
(36"W x 4"H)



FROG Leap Mineral  
Transition Dangler  
**20-48-0679**  
(6"D x 11"H)



FROG Leap Chlorine  
Transition Dangler  
**20-48-0678**  
(6"D x 11"H)



FROG Leap Algae  
Transition Dangler  
**20-48-0680**  
(6"D x 11"H)



FROG Leap Floor Stickers  
**20-48-0676**  
(16"W x 24"H)



FROG Leap  
Mineral Display  
**03-01-2041**  
(4"W x 8.5"H)  
Art card **20-48-2142**  
also available



FROG Leap Poster  
and Mineral Stand  
**20-48-2141**  
Stand  
(22"W x 60"H)  
**20-48-2140**  
Poster  
(22"W x 28"H)



Fresh Mineral Water  
End Cap Header  
**20-48-0681**  
(42"W x 24"H)

# COMPETING AGAINST SALT CHLORINE GENERATORS



## HOW POOL OWNERS FEEL ABOUT THEIR POOL\*

Top 3 Likes	Top 3 Dislikes
Ambiance	Maintenance
Fun Factor	Cost
Health Benefits	Water Balance

\*Based on an independent study of pool owners

Salt Chlorine Generators sound like they address the pool owners dislikes but the reality is...

- Salt pools require monitoring water balance and chlorine levels like any other pool
- Salt pools need an expensive replacement cell every few years
- Salt pools typically drive pH up making it more difficult to balance

## HERE'S WHY FROG IS THE BETTER OPTION

FROG Mineral Benefits	Salt Generator Faults
Kills bacteria 2 ways	Chlorine-only sanitizer
Reduces chlorine use up to 50%*	Produces chlorine at standard or higher levels
Helps keep the pH neutral	Drives pH up needing acid doses regularly
Easy on pool surfaces and equipment	Corrodes heaters, patio pavers & more
Works continuously for 6 months	Cells require cleaning regularly
Accepted on any type of pool	Not allowed on steel walled pools
Does not need electricity to work	Increases electric bills every summer
Reasonably priced	Replacement cells are expensive
Easy to use FROG Water Care App	Readings can be complicated

\*Compared to the minimum EPA recommended chlorine level of 1.0 ppm for a stabilized swimming pool.

### FRESH MINERAL WATER

### Supporting Literature



#### BROCHURE

ORDER CODE: [20-48-0625](#)

Help your customers who are considering salt to understand the value in choosing FROG instead.

# SEVEN REASONS TO USE PARTNERS.KINGTECHNOLOGY.COM

## #1 INTERACTIVE TRAINING

No log-in necessary and get a free FROG polo for completing one or more courses!

## #2 FREE POP ORDERING

No need to wait until 8am-5pm Central to call in an order.

## #3 REPLACEMENT PARTS ORDERING

Is your distributor out of a part you need? Order direct on a credit card.

## #4 PROGRAM PARTICIPATION

Sign up for programs and receive your free goods faster by uploading your program documents.

## #5 CO-OP ADVERTISING

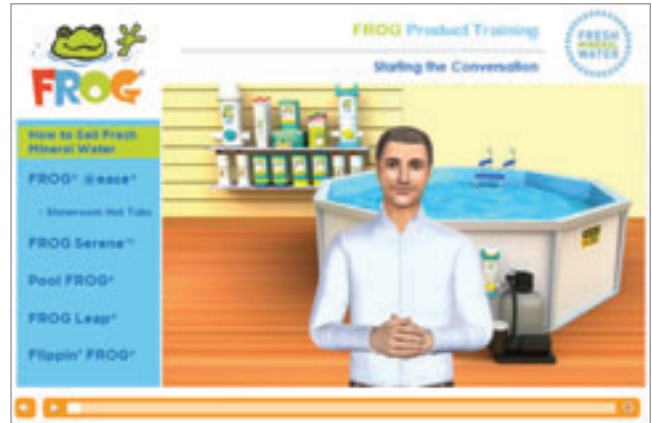
Get paid for advertising FROG in print, digital or radio with easy-to-order pre-made materials or ask us to customize something.

## #6 TOOLS TO UPDATE YOUR WEBSITE

Use our image library for low and high resolution photos and our helpful website guide.

## #7 DOWNLOAD HELPFUL INFORMATION

Get the latest catalog or familiarize yourself with our MAP policy.



**Not yet visited [partners.kingtechnology.com](https://partners.kingtechnology.com)?**

Register today and start utilizing this helpful resource to grow your FROG business.

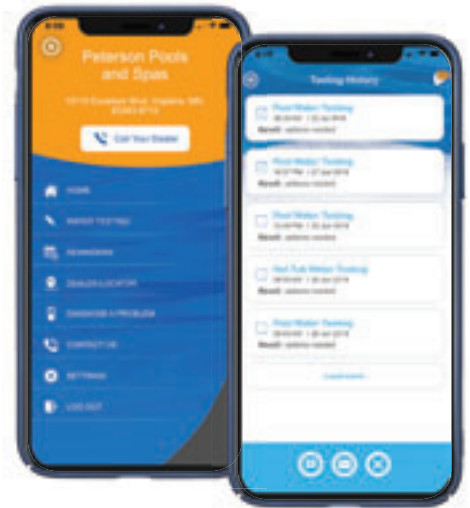
# FROG WATER CARE APP CONTINUES TO EVOLVE TO HELP YOU SELL MORE



As we learn from app users and our dealers, we continue to improve the functionality of our app. It now offers:

## MORE DEALER INTEGRATION

- New Personalized QR code for consumers to download the app and immediately show your store as their dealer
- Dealer name and address prominently displayed on the menu page with a large “call your dealer” button
- New ability for consumers to send you their test data if they need customer service



## USER INTERFACE IMPROVEMENTS

- Test results appear one at a time rather than a long list of steps
- Allows user to set reminders, call their dealer or move to the next step
- Calendar integration with phone, Google and Outlook for reminders to test their water



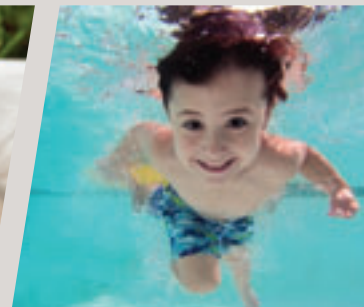
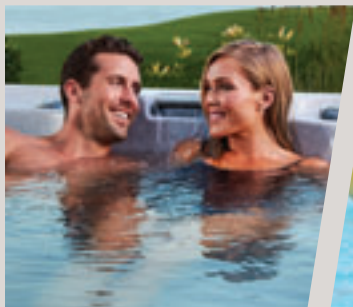
Order your counter card with individualized tear off sheets [for your store at: frog.controlthebrand.com](http://frog.controlthebrand.com)



DON'T HAVE THE APP YET? DOWNLOAD HERE

WATCH FOR NEW UPDATES COMING THIS WINTER.

# COMING IN 2020



©2020 King Technology, Inc. The following are trademarks of King Technology, Inc.:

FROG®  
FROG LEAP®  
Pool Wake Up!®  
Pool Hibernation®

Flippin' FROG®  
Flippin' FROG XL®  
FROG Leap® All-Out®  
FROG Serene®

FROG® Filter Mate™  
Instant FROG®  
FROG® @ease®  
SmartChlor®

FROG® Jump Start®  
Fresh Mineral Water®  
New Water®  
Perform-Max™